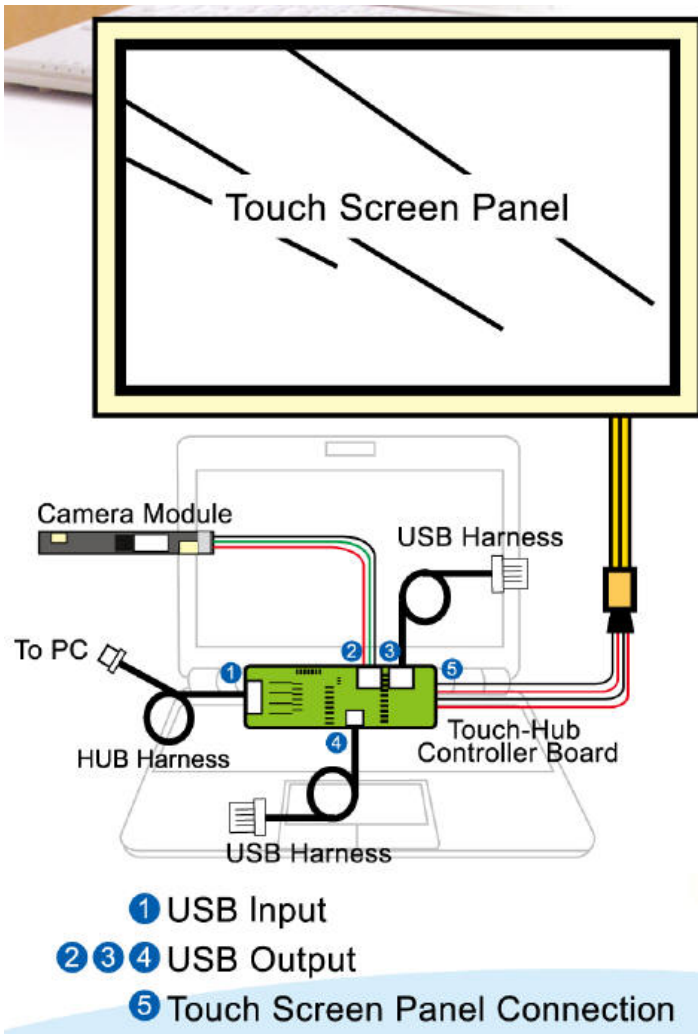


TouchKit Setup



Reminder:

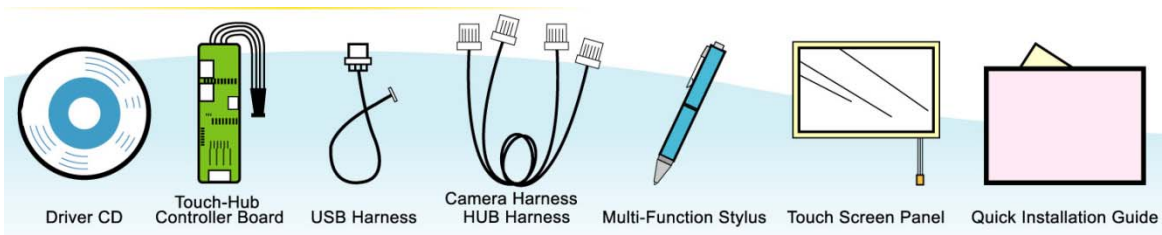
Please conduct 25 point linearization for better touch screen linearity hence better accuracy.

- under **Setting** tab/**Linearization Style**/choose 25 Points
- under **Tools** tab/**Clear and Calibrate**/do 4 point alignment
- Under **Tools** tab/**Linearization**/do 25 point linearization

☞ For more detail assembly instructions please visit Dell official website.

<http://support.dell.com/support/edocs/systems/ins910/en/sm/index.htm>

Package Content

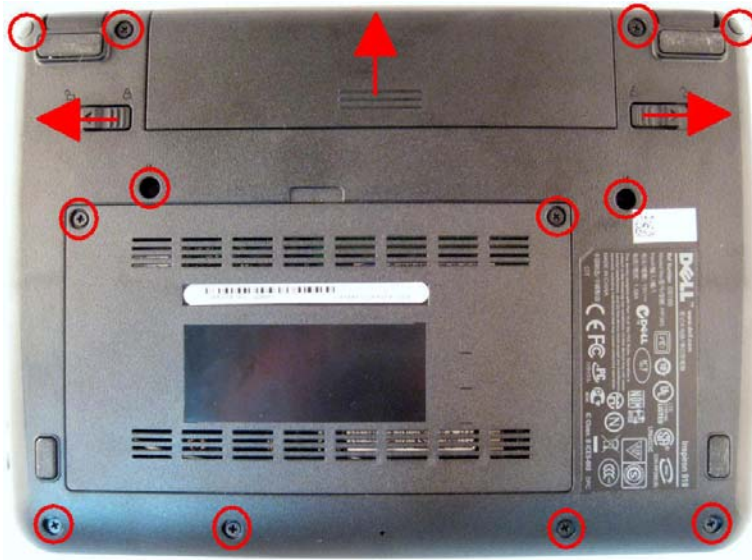


Controller Board Preparation



Apply rubber adhesive on the bottom side of the Touch-Hub Controller board as insulation.

Dell Mini 9 Installation Guide



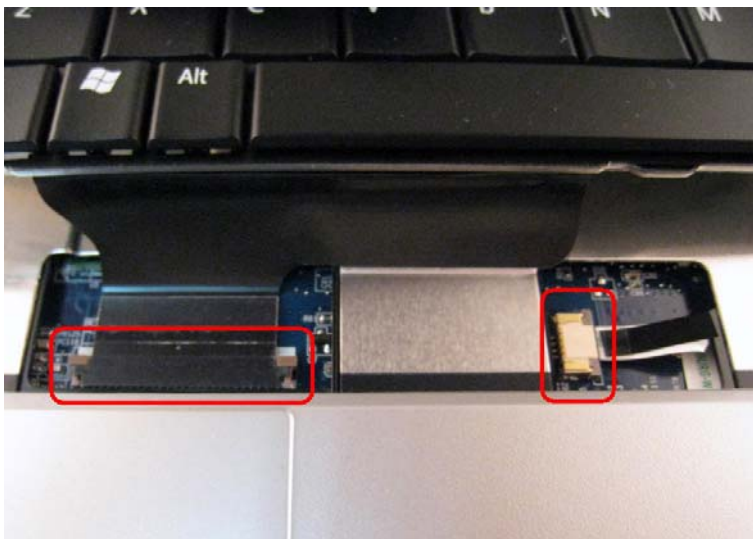
Step 1.

- ➡ NOTICE: To help prevent damage to the system board, you must remove the battery from the battery bay before you service the computer.
- Remove all 12 screws from the base of the computer including the ones under the left and right rubber bumper



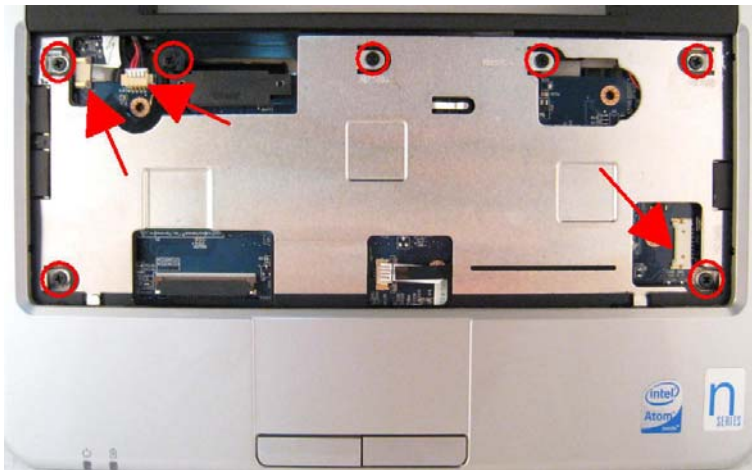
Step 2. Module Cover

- Remove the bottom right screw to release the system board.
- Release the wifi antenna connections.



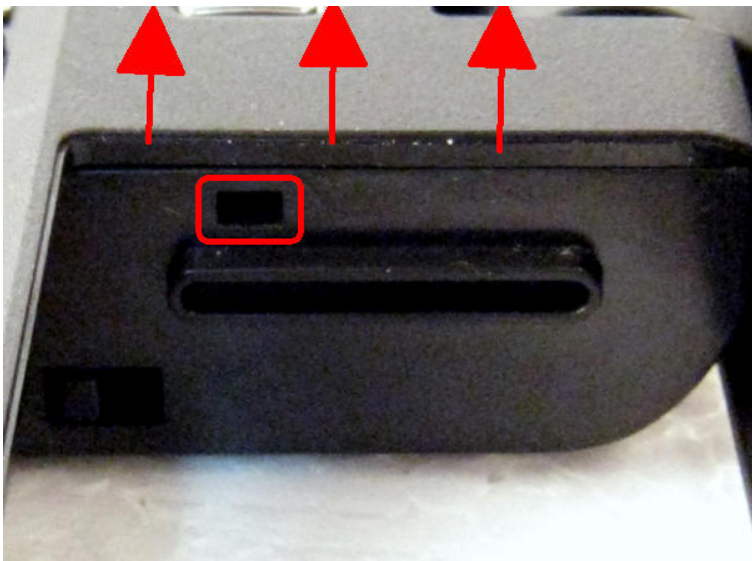
Step 3.

- Carefully lift the keyboard and hold it to access the keyboard connector.
- Push out the securing tabs that secure the keyboard cable to the system board and remove the keyboard.
- Release the touchpad cable to the system board.



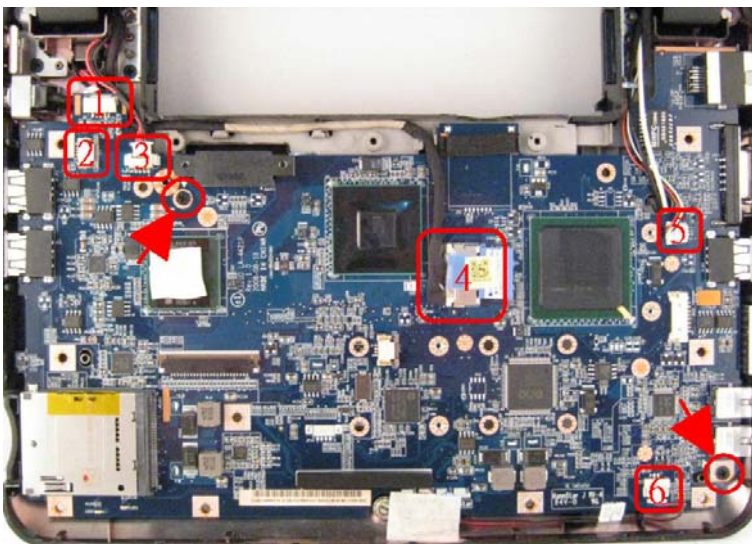
Step 4.

- Remove all 7 screws from the top of the palm rest.
- Remove Bluetooth card cable
- Remove power button cable and AC adapter cable connector



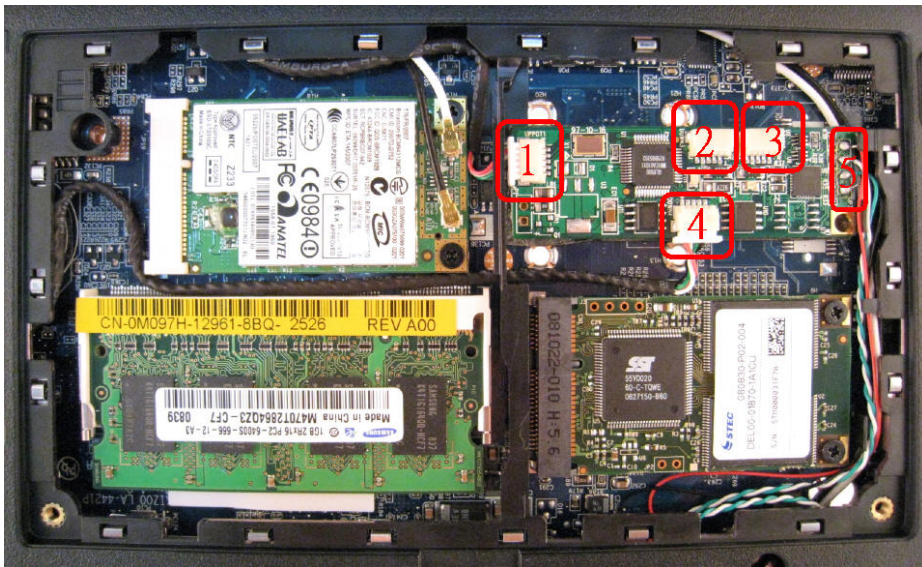
Step 5. Removing the palm rest

- Starting at the top of the palm rest, use your fingers to gently ease the palm rest from the computer base by lifting the inside of the palm rest while pulling in on the outside.
- NOTICE: Use pointy object to release the hook inside the red rectangle on both sides for the palm rest to be lifted.



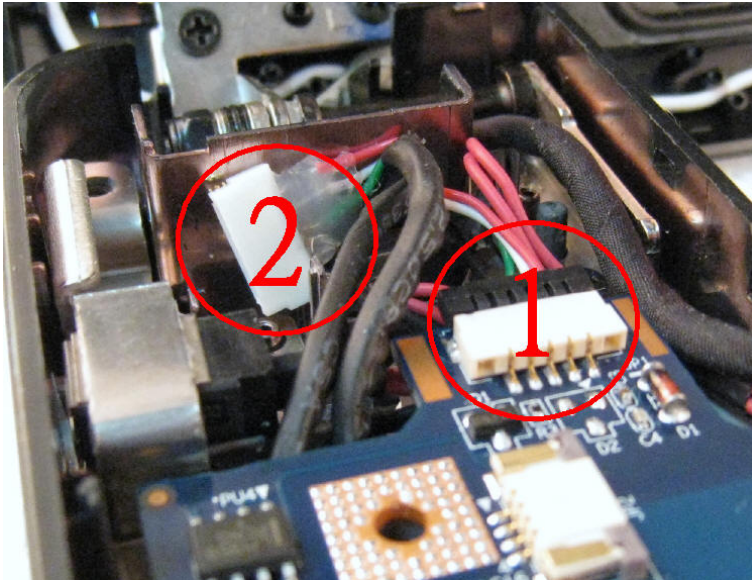
Step 6.

1. Release camera connector
 2. Power button cable connector.
 3. AC adapter cable connector.
 4. Release display connector.
 5. Release speaker connector.
 6. Release microphone connector.
- Remove the 2 screws to release the system board.



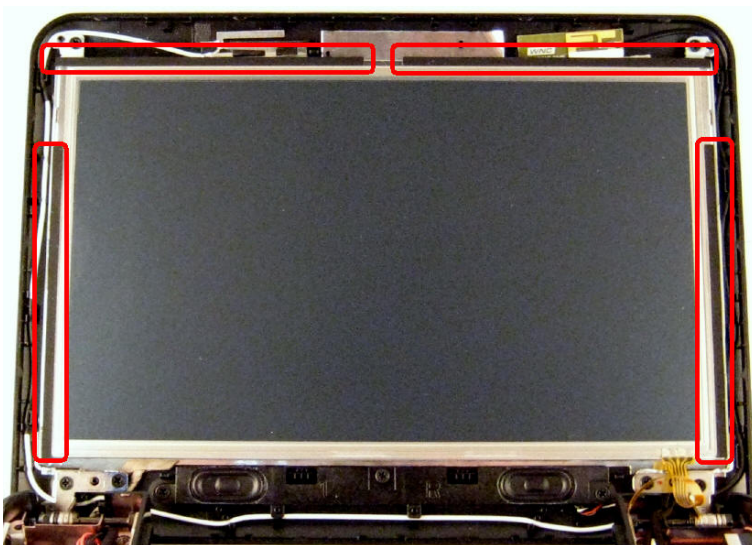
Step 7. Touch Hub Controller

1. USB input port from system board camera connector to Touch Hub Controller board.
2. USB output port.
3. USB output port.
4. USB output port to camera board connector cable.
5. To touch screen.



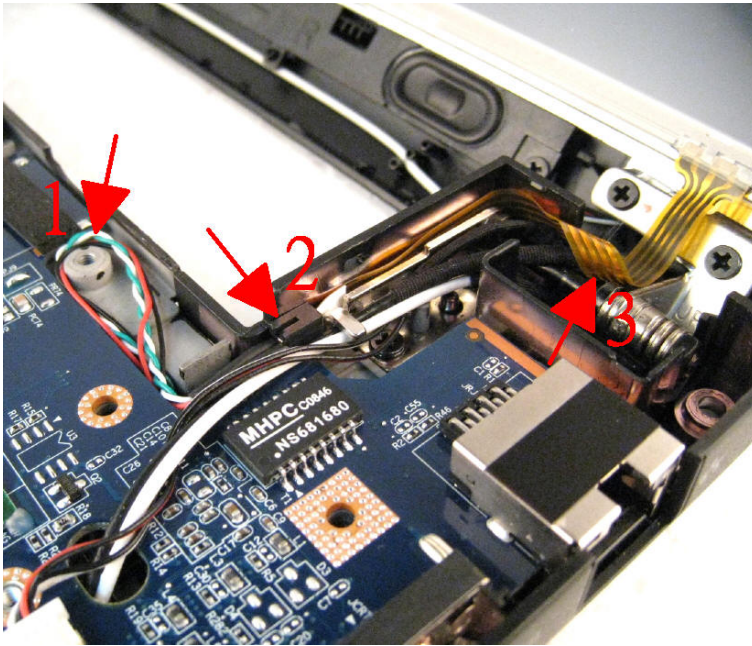
Step 8.

1. System board camera connector to USB input port of controller board.
2. USB output port from controller, connecting to camera board connector cable.



Step 9.

- ➡ NOTICE: The display bezel is extremely fragile. Be careful when removing it to prevent damaging the bezel.
- Remove double sided tape around the frame of the touch screen for easy mounting.
- Place shock Absorber Rubber on the metal frame of the LCD module **surrounding** the touch screen panel edges.



Step 10.

1. Neatly sort out the cable from controller to the touch screen.
2. Yellow ribbon cable connector placement.
3. Make a loop for the ribbon cable and store it along the side of the base of the computer.

For more detail assembly instructions please visit Dell official website.

<http://support.dell.com/support/edocs/systems/ins910/en/sm/index.htm>

Remark:

1. Please conduct 25 point linearization for better touch screen linearity hence better accuracy